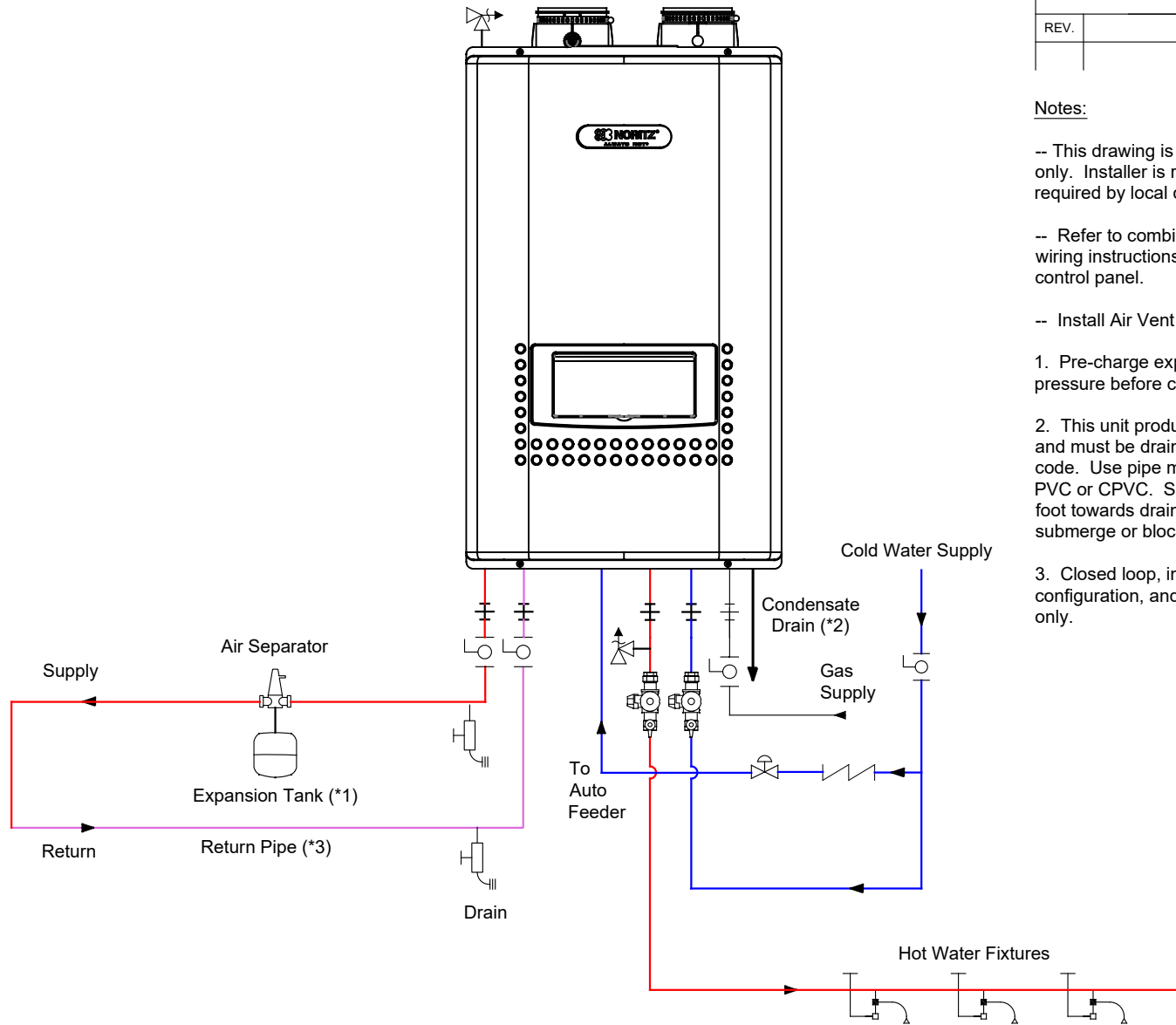


REVISIONS

| REV. | DESCRIPTION | DATE | APPRVD. |
|------|-------------|------|---------|
| | | | |

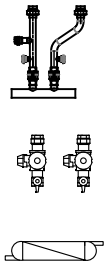
Notes:

- This drawing is meant to show system piping concept only. Installer is responsible for all equipment & detailing required by local codes.
 - Refer to combi boiler installation manual for electrical wiring instructions and activating Heating modes with the control panel.
 - Install Air Vent at highest point in plumbing system.
1. Pre-charge expansion tank to heating system pressure before connecting to heating system piping.
 2. This unit produces acidic condensate during operation and must be drained and disposed according to local code. Use pipe material that will not corrode such as PVC or CPVC. Slope horizontal pipe downwards 1/4' per foot towards drain or condensate pump. Do not submerge or block end of drain pipe.
 3. Closed loop, intended to be a temporary pipe configuration, and to enable domestic hot water usage only.



11160 Grace Avenue
 Fountain Valley, California 92708
 866-7NORITZ (866-766-7489)
 www.noritz.com

| |
|--|
| MODEL: CB180 / CB199 |
| APPLICATION: No Heating Domestic Hot Water Only |
| DRAWING NUMBER: CB-DHW |
| DRAWING DATE: December 2018 |



Noritz Accessories

Primary/Secondary Manifold Kit
 (# MK-CB-1)

DHW Isolation Kit w/
 Pressure Relief
 3/4" (# IK-WV-200-1-[Th or SW])

Residential Neutralizer
 (# NC-1)

Note: This diagram is for reference only. Installation must comply with State and Local Code, all gas and water pipe must be sized correctly to specific length, according to accepted engineering methods or the UPC Code for Noritz Water Heaters to operate correctly.

| | |
|-----------------------|--|
| Shut-off Ball Valve | Aquastat (Honeywell Model #L6006A or L6006C) |
| Check Valve | Pump |
| Union | Pressure Regulator |
| Pressure Relief Valve | Backflow Preventer |